



Matua Bowling Club

Corporate Pricing 2019



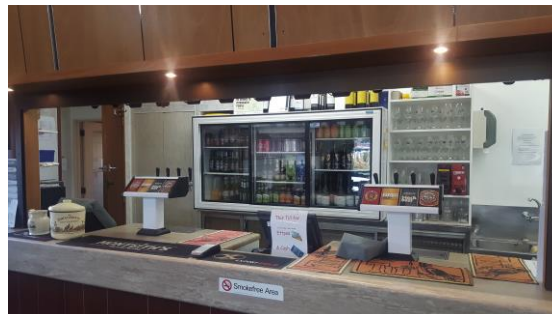
Options Available



Hall Hire



Social Bowls



Bar



Prices Based on size and Type of client Source

	E.g	Non Member	Member Discount	
		Gst Inclusive	GST	Exc GST
Major Corporates - 80-100 plus		\$ 35	\$ 4.57	\$ 30.43
Medium Corporate 30 - 79		\$ 31	\$ 4.05	\$ 26.95
Small Corporate less than 30 people attending		\$ 27	\$ 3.53	\$ 23.47
Large not for Profits 80-100 plus people attending	Cambodia trust	\$ 28	\$ 3.66	\$ 24.34
Medium Not for Profit functions 30-79 people attending		\$ 24	\$ 3.13	\$ 20.87
Small Not for Profits functions Less than 30 attending	JP, Table Tennis	\$ 20	\$ 2.61	\$ 17.39
Private Functions Large 80-100 plus attending		\$ 26	\$ 3.39	\$ 22.61
Private Functions medium 30-79 people attending		\$ 23	\$ 3.00	\$ 20.00
Private Functions medium less than 30 people attending		\$ 20	\$ 2.61	\$ 17.39



What you Need to Know when hiring Bowls Matua for your function.

AS AT JUNE 2019

Current Status of Bookings

Our clubrooms and greens are available for hire most days of the week. But we need to know a specific date so we can see if it clashes with a bowls event commitment. It is possible to co-exist with a club event because our members play bowls on grass greens 1 and 2. Our synthetic green 3 area is retained exclusively for our guests. In most cases we find a way to share the clubhouse facilities.

Charges and Prices (Exclusive of GST)

Our hire charges are based on an hourly rate for the clubroom and/or the Legacy room, plus \$50 for the kitchen, or \$20 per the Bar B Que. \$10 per person playing bowls (which includes bowls sets that we provide plus bowls instruction) and use of a very good licenced bar.

We hire a professional bar person after 6 pm for \$25 plus GST per hour which we on charge to you at cost. If you require bar service before 3:30pm, we may have to charge the bar hours on an hourly basis to 3:30pm.

If your group do not play bowls and are approaching 80 - 100 people we have to apply for a liquor licence which costs \$64.

Facilities (log onto Facebook Bowls Matua or www.bowlsmatua.org.nz – to see our facilities)

In our main clubhouse, we have 25 tables which have six chairs per table. This allows a spacious area for your guests to enjoy and dance.

You can set out the clubrooms in any way you desire and decorate as you wish. You can move tables to suit your functions requirements. This can be done in the preceding day or night, depending on what is happening with our member events. Some clients store the tables they do not use in the legacy room.

We have a big outside undercover BBQ area and table and chairs and a good space to erect an awning or gazebo. The BBQ hire is \$20 and guests are responsible for cleaning it after use.

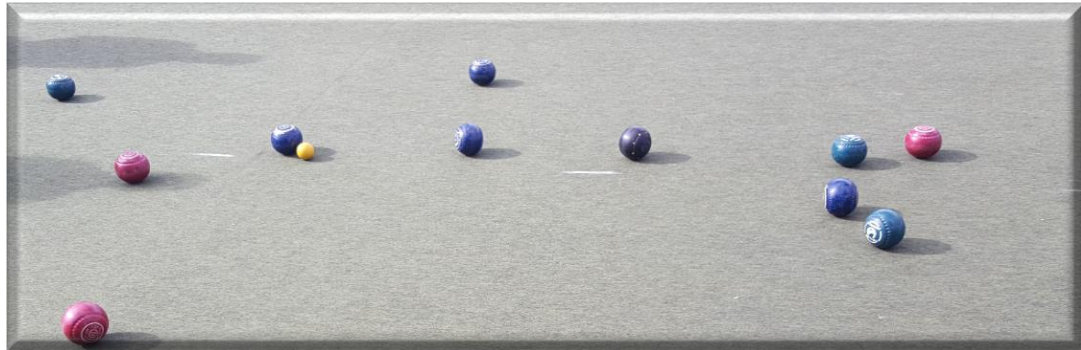
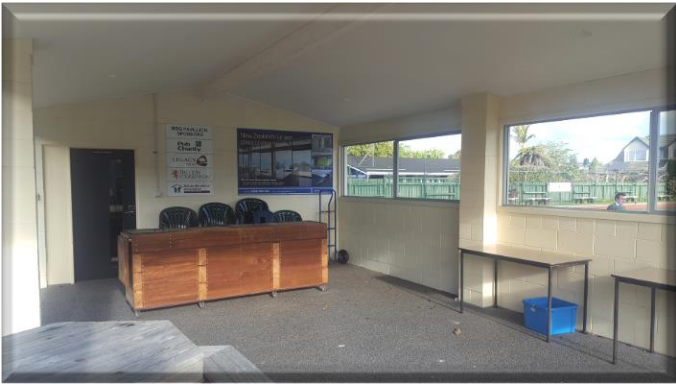
Our guests play bowls on an artificial green which means if it rains, it recovers very fast. Children are welcome but must be supervised and are not permitted to play on Greens 2 and 3 or the greens closest to Levers Road.

- ▶ We have smaller (our Legacy room) room for hire which can be used for smaller groups up to 50 standing and sitting. If a table meal is required, the room accommodates five tables and 5 seats per table - so upwards of 30 people.
- ▶ Guests are permitted to take their drinks to the playing green. We allow only flat holed shoes and bare feet. Guests are advising to wear a sunhat and use sunscreen.
- ▶ Catering
- ▶ We prefer our clients to self-cater and have a fully equipped kitchen with oven, commercial dishwasher, fridge, cutlery, plates, bowls, and warmers. We have a commercial urn and two hot water units.
- ▶ Parking/Access
- ▶ We have excellent parking facilities for up to 100 cars and we can allow cars to access the club through a rear gate to unload heavy items. We can reserve car parks closer to the clubhouse entry for your guests. Just let us know how many reserved spaces you require.
- ▶ I have attached our current bar prices for private functions
- ▶ Music/Sound
- ▶ We have a good sound system and microphone. This allows also you to use an IPAD/Mobile phone or Android. You are able to set up your own sound/music with your own music arrangements and that can include a live band.
- ▶ We have a policy on noise levels which we can take you through. Some guests place their own speaker near where bowls are played. We can set up your IPAD/android to play your own playlists. We have 3 CD player as well
- ▶ Toilets
- ▶ Our toilets are large and we have a disabled toilet. We ask our clients to be responsible for cleaning up afterwards under our guidance and leaving the club the same way they found it. We may ask for a cleaning deposit bond of \$100.00 which is netted off from your invoice.

Bar Prices 2019							
			Current Corporate Pricing				
Following price list is affective from 1 August 2019							
Kegs		price inc GST			Lge Hndle	Small Handle	
Speights Mid Ale					\$ 7.20	\$ 4.80	
Speights Dark					\$ 7.20	\$ 4.80	
Export Gold Keg					\$ 7.20	\$ 4.80	
Lion Red Keg					\$ 7.20	\$ 4.80	
		Jug			\$ 13.20		
Pack Beer							
Steinlager Classic					\$ 6.00		
Steinlager Pure					\$ 6.00		
Heineken					\$ 6.00		
Heineken Light					\$ 6.00		
Corona					\$ 7.20		
Speights Mid Ale					\$ 6.00		
Macs					\$ 6.00		
Export Citrus					\$ 6.00		
Tui					\$ 6.00		
Guinness					\$ 8.40		
Amstel Light					\$ 6.00		
RTD's & Ciders							
Black Heart and Cola					\$ 6.00		
Coruba and Cola					\$ 6.00		
Woodstock Bourbon and Cola					\$ 6.00		
Woodstock & Cola					\$ 6.00		
Park Lane Gin & Tonic					\$ 6.00		
Gordons Gin & Tonic Slimline					\$ 6.00		
Monteiths Crushed Apple Cider					\$ 6.00		

Wines							
Montana Pinot Gris, Chard, Sauv Blanc, Pi				\$ 6.00	Glass 150ml		
Peter Yealands Lighter Alcohol				\$ 6.00	bottle 30.00		
Mcguigans PB Range				\$ 6.00			
Wolf blass Yellow Label Range				\$ 6.00			
Lindauer				\$ 9.00			
Country / Chasseur Cask Wine				\$ 5.50			
Spirits							
Famous Grouse				\$ 2.00	Nip		
Grants				\$ 2.00			
Teachers				\$ 2.00			
Jim Beam				\$ 2.00			
Smirnoff				\$ 2.00			
Gordons				\$ 2.00			
Seagers				\$ 2.00			
Bacardi				\$ 2.00			
Coruba				\$ 2.00			
De Valcourt Brandy				\$ 2.00			
Chatelle Brandy				\$ 2.00			
Black Heart				\$ 2.00			
Non Alcoholic							
Bundaberg range				\$ 3.60	bottle		
Schweppes				\$ 3.60			
Coke, L&P Sprite				\$ 3.00	can		
Orange Med				\$ 1.60	glass		
Orange Lge				\$ 3.00	glass		
Water				NC			





Contacts:

- ▶ Bowls Matua bowls.matua@xtra.co.nz 07 576 9980
- ▶ Coordinator Richard Kluit rjkluit@xtra.co.nz 0274337675
- ▶ President Cliff Osborne cliffosborne89@gmail.com
- ▶ www.bowlsmatua.org.nz